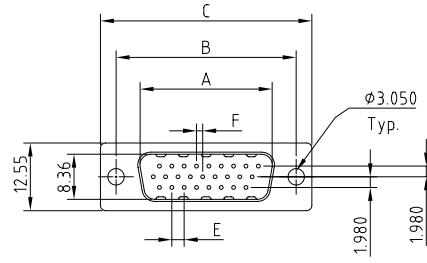
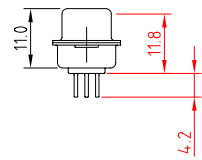
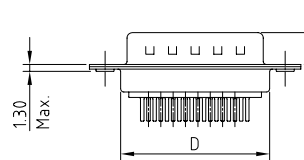


RevNo	Date	Signature	Checked



**108XXMXXX - - - - LF**

D-Sub 180D	Vacant:Default PBT
Typ	P2:PA6T
15	P3:LCP
26	P4:PA9T
44	Male
62	Vacant:No Screw
7.Full Nickel	S:4.8
8.Nickel /But back-Shell:Tin	M:5.0
9.Tin	L:5.8
11.Gold	Vacant:No Accessories
1.White	A After -Screw H=3.0
3 Black	B After -Screw H=4.0
4.Yellow	C After -Screw H=5.8
6 Green	D Before -Screw H=5.8
9 Blue	E Coalescent Nut H=5.8
10. PC99	F. Befor--H=4.0
1 Full Gold	G After -H=6.1
2 Half Gold	H. Ater -H=6.1 ,And Before H=5.3
	Vacant :Default 1u'
	3. 3u'
	5. 5u'
	6. 10u'
	7. 15u'
	8. 30u'



Re Layout P.C.B.  
15 POSITION

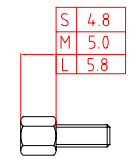
Re Layout P.C.B.  
26 /44 /62POSITION

Note:

No.	A	B	C	D	E	F	H
15	16.92	24.99	30.81	19.23	2.29	1.145	7.04
26	25.25	33.32	39.14	27.56	2.29	1.145	6.88
44	38.96	47.04	53.04	41.28	2.29	1.145	6.88
62	55.42	63.50	69.32	57.33	2.41	1.205	7.00

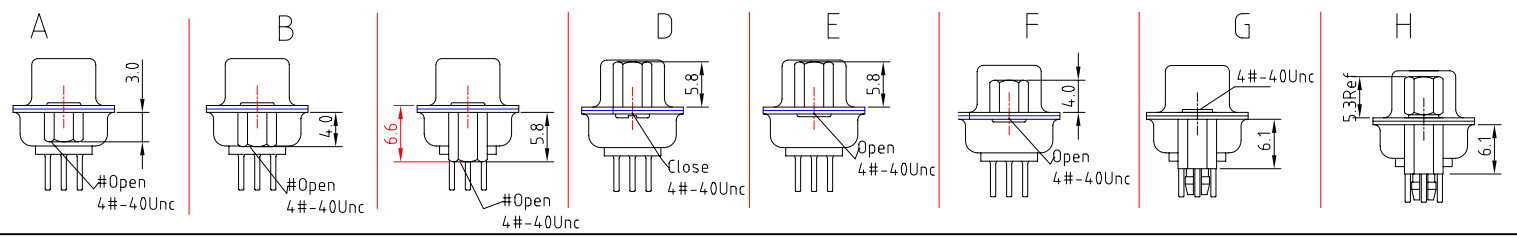
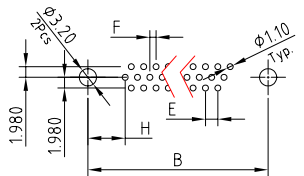
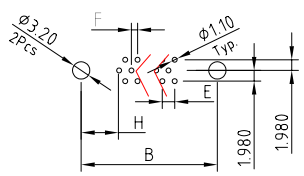
**ELECTRICAL CHARACTERISTICS**

Contact Current Rating: 3Amperes.  
 Dielectric Withstanding Voltage: AC 500V at sea level.  
 Insulation Resistance: 1000Megohms Min.  
 Contact Resistance: 25Milliohms Max.  
 Operation Temperature : -55°C to +105°C.



**Material**

Contact :Copper Alloy.  
 Insulator:PBT: (Select PA6T /LCP /PA9T)  
 Shell: SPCC.  
 Screw: Copper Alloy.



DRAW.BY	LinHaiFong	DATE	2005-10-10	UNIT	MM	TOLERANCE UNSPECIFIED	X ±0.30 .XX ±0.25 .XXX ±0.150	Ang. ±2°
APPVL.BY		VERSION	A	SCALE		DWG.No.	F:/XX/ / +	

Chin Shong Enterprise CO., LTD.	ITEM	D-SUB H-D Male 180D- DIP
	PART No.	
	CUSTOMER	